



IH Health Emergency Management (HEM) Overview

Ryan Kuhn
Emergency Coordinator – IH East
IH Health Emergency Management

Overview of Interior Health

- Organization of over 20,000 employees and physicians
- Covers a geographic area of roughly 215k square kilometres with a population of more than 750,000
- Three primary regions – IH East covers 15 distinct communities and surrounding areas
- Size poses challenges but also means we have a robust emergency response capability

IH HEM Team

- One Director
- Three regional Emergency Coordinators
- Two special projects coordinators
- 24/7 call rotation that includes senior managers and leaders trained in emergency response coordination

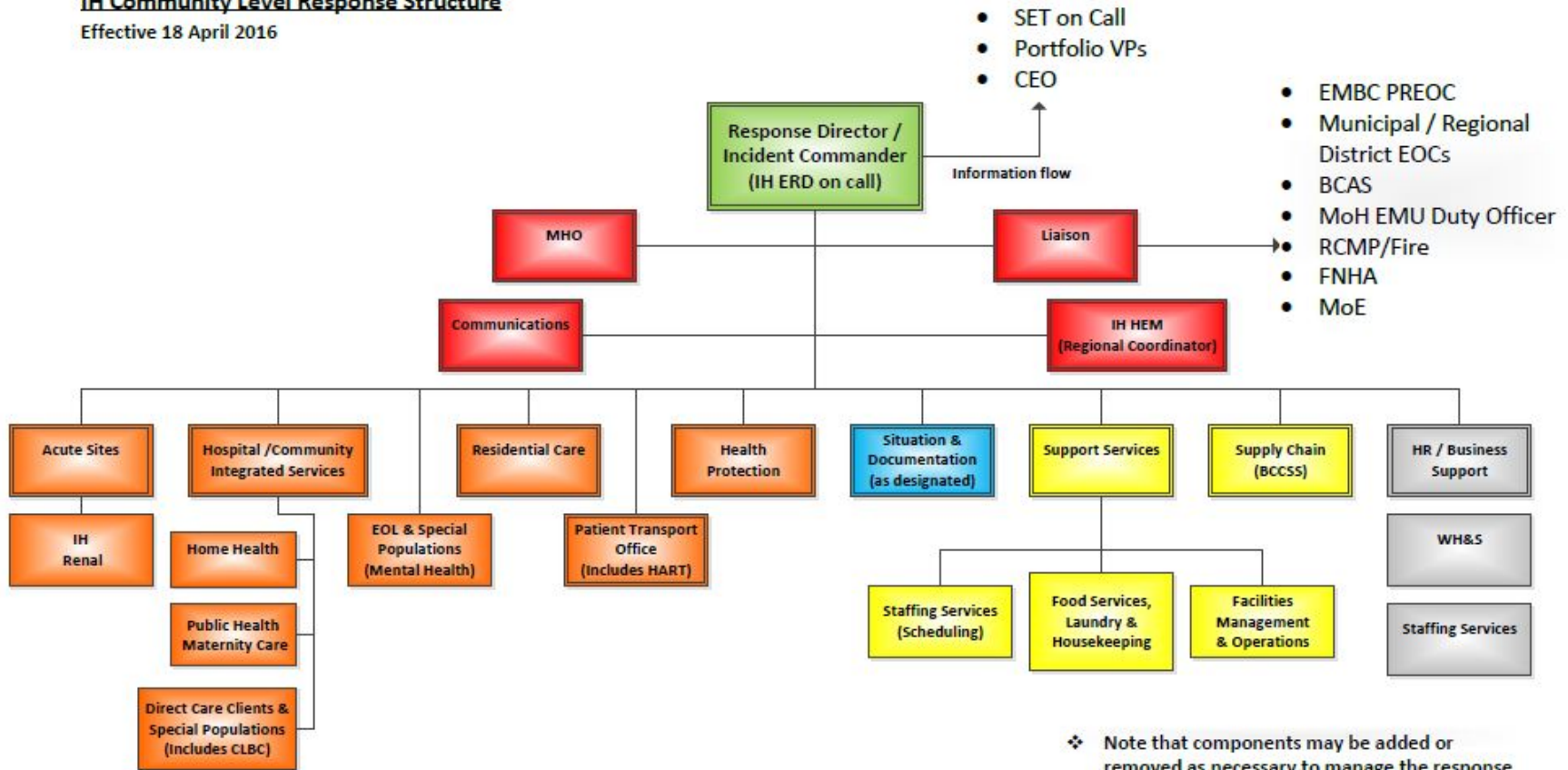
IH HEM Role

1. Identify and recommend priorities for IH's emergency response initiatives and policies
2. Develop & manage IH's processes for response to emergencies & disasters
3. Develop & deliver training and exercises to support response capabilities
4. Liaison & linkages (Agencies, MoH , HA, Inter-Provincial, Municipal and Regional govts)
5. Response: Leadership & Support

Health Incident Command

IH Community Level Response Structure

Effective 18 April 2016



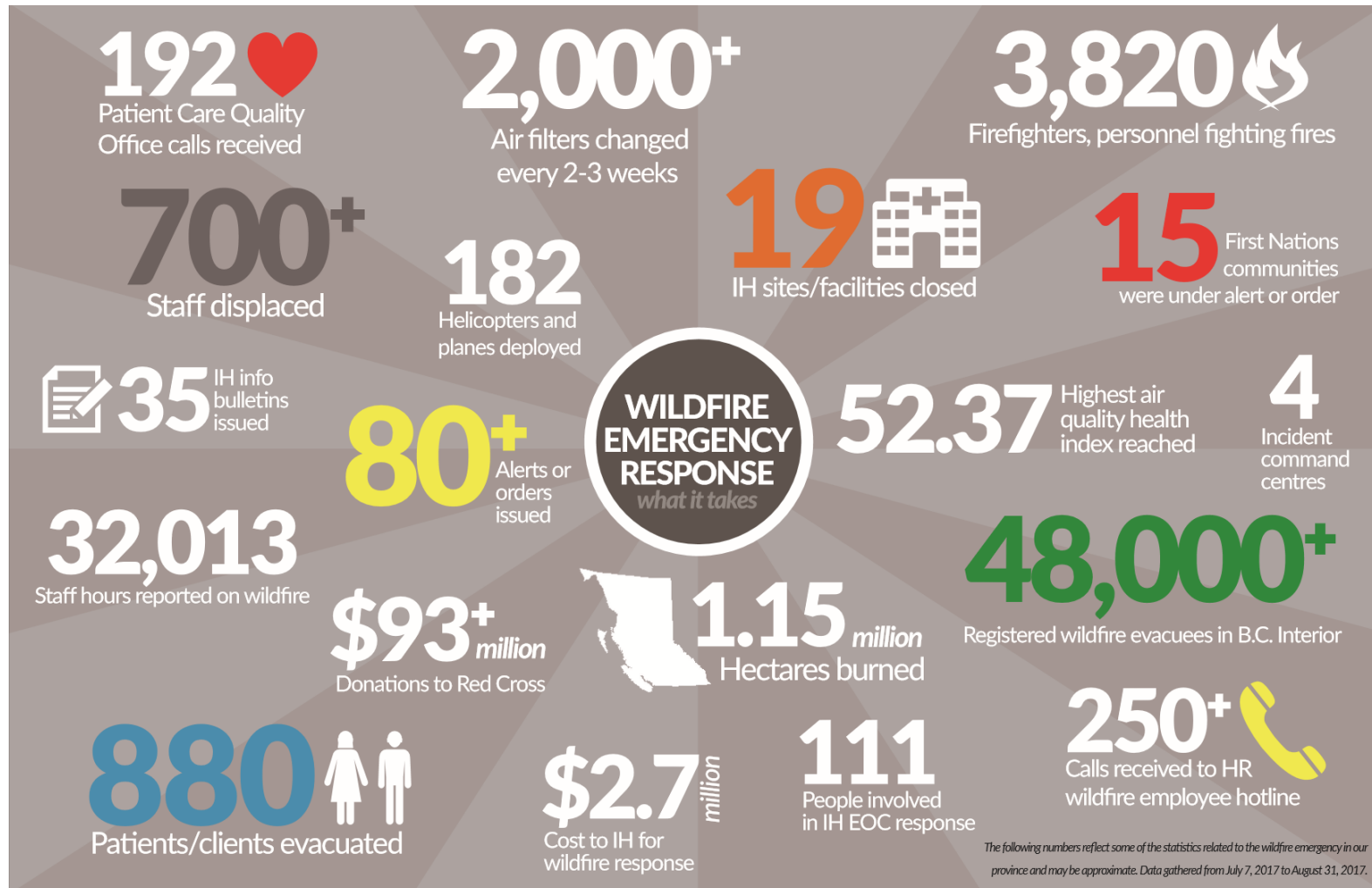
Components of IH Emergency Response

1. Sites/Facilities
2. Clients in the community
 - a. Home Health
 - b. Mental Health
 - c. Renal / Dialysis
 - d. Direct Care Clients / Special Populations
3. Public Health (Pandemic, EVD, Overdose, etc.)
4. Environmental Safety

Types of Emergencies

- Site Based Events
 - **Mass Casualties, Evacuation, Other Code Response**
- Environmental Health Events
 - **Water Quality, Wildfire Smoke, Food Safety**
- External Events
 - **Wildfires, Flooding, Mass Gatherings**
- Health Authority Wide Events
 - **Pandemic, Ebola, Sandoz Drug Shortage**

2017 Wildfire Response



Liaison and Linkages

- Key for mitigation, planning, response and recovery
- Coordination in response includes: relocation, transportation resources, public health concerns, reception centres, ESS support, among others
- Bottom line: IH cares for our most vulnerable individuals
- Important IH receives timely notification of emergency events (we often start evacuation on alert)

Your first point of contact in Interior Health:



IH Emergency Response Director On Call

1-855-851-4193

- Available 24/7
- First point of contact into IH Programs, Health Protection & facilities for emergency / disaster response events
- Provides initial liaison with: EMBC, PREOCs, Municipal EOCs & other regional agencies / partners

Email: IHemergencydisasterresponseoncall@interiorhealth.ca